



GUIDE TO MIGRATE OLM TO PST

WWW.MailsDaddy.com





ABOUT COMPANY

MailsDaddy delivers dependable, efficient, and secure solutions designed to streamline the management of personal and business data across multiple platforms. Specializing in seamless data migration, the company has been offering innovative software tools for Gmail recovery and migration since 2015.





WHAT IS OLM ?

OLM (Outlook for Mac) is a file format used by Microsoft Outlook for macOS to store email messages, contacts, calendars, tasks, and other mailbox data. It's similar to the PST file format used by Outlook for Windows, but OLM files are specifically designed for Mac systems.



WHAT IS PST ?

A PST file is a Personal Storage Table a file format used by Microsoft Outlook to store email messages, calendars, events, contacts, tasks, and other mailbox items. It organizes and saves all these data locally on the user's system.

MAILSDADDY OLM TO PST CONVERTER



There are many OLM To PST converter solutions in the market, But MailsDaddy OLM To PST converter software is designed for those users who have zero technical knowledge and they want to convert Mac OLM data like emails, Contacts, Calendars, Tasks, and Journals to convert into PST without any difficulty. This tool comes with several features at an affordable price.



FEATURES OF MAILSDADDY OLM CONVERTER

Date filter option

Users can easily export emails between the start and to end date without any alteration.

Multiple export options

It provides many OLM file export options like (PST, MSG, RTF, EML, EMLX, HTML, MHTML, CSV, VCF, and ICS(for calendars). And migrate Office 365 and Live Exchange.

Support Windows

This tool is compatible with all versions of Windows 32-bit and 64-bit Windows operating systems.

OTHER FEATURES

- **Simple User-interface**

The software GUI is easy to navigate and migrate OLM to PST format with zero technical Knowledge

- **Data Integrity**

This tool provides complete data integrity without any change in emails, contacts, calendars, tasks, and journal entries.

- **Preview Emails**

In this option, the user can open and view emails before conversion from OLM to PST and can check email attachments properly in the mail section.

- **Split large OLM file**

Suppose your file is too large and difficult to handle, with the help of this feature you can split it into small PSTs



Step by Step guide to convert OLM To PST

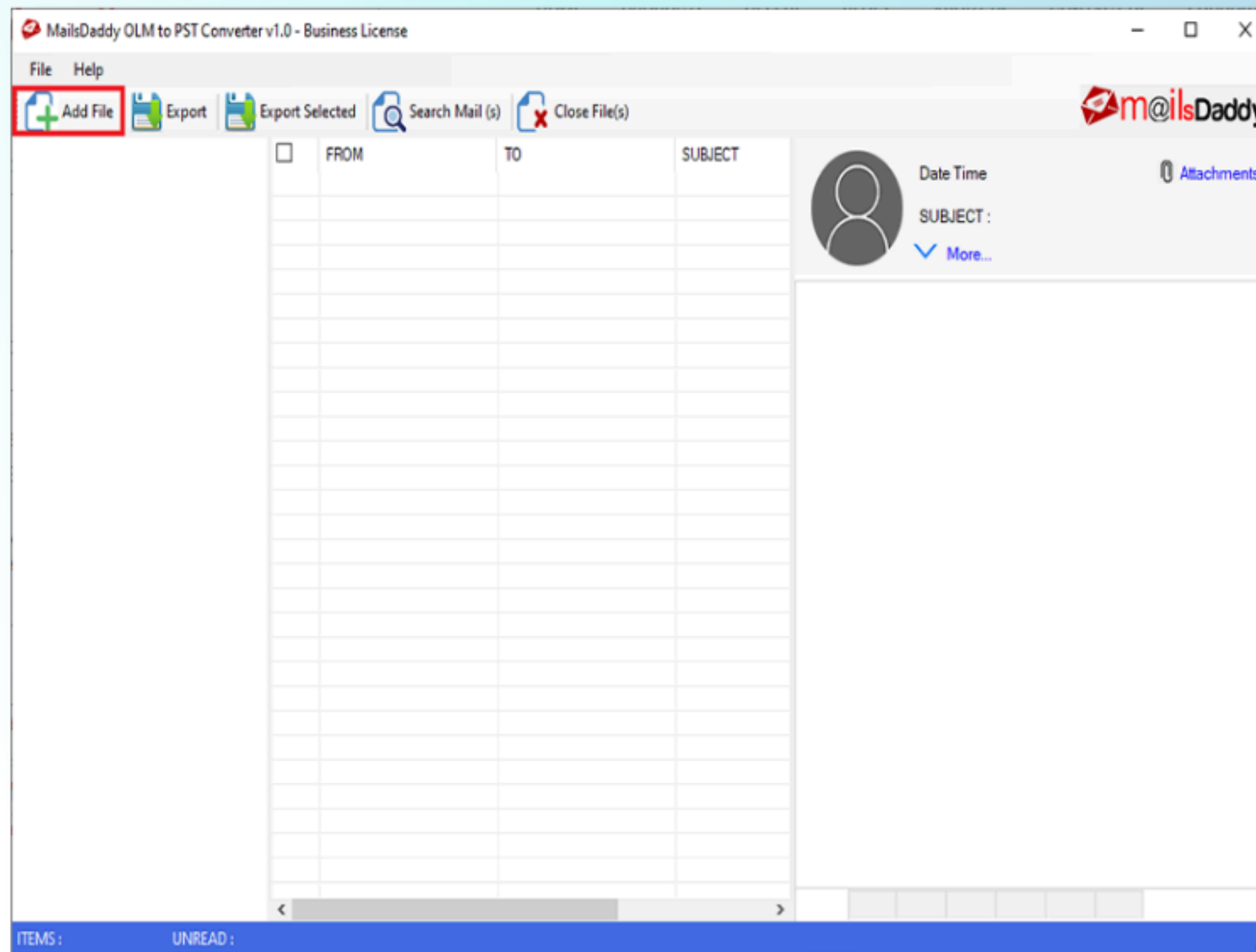
STEP 1

Download **OLM To PST** software from the official **MailsDaddy** website and install it into your machine.



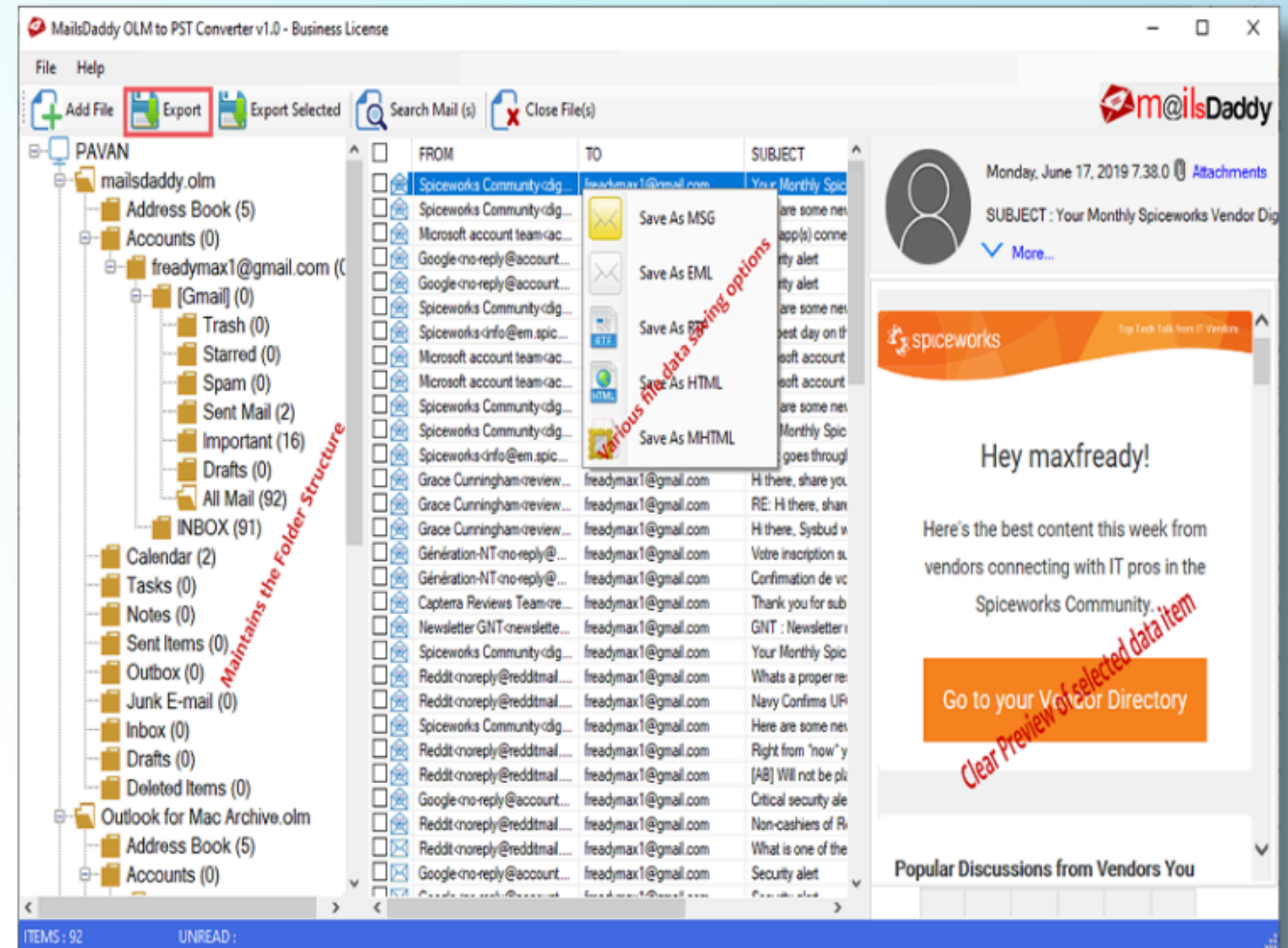
STEP 2

Click the **Add File** button in the left corner to import the OML file.



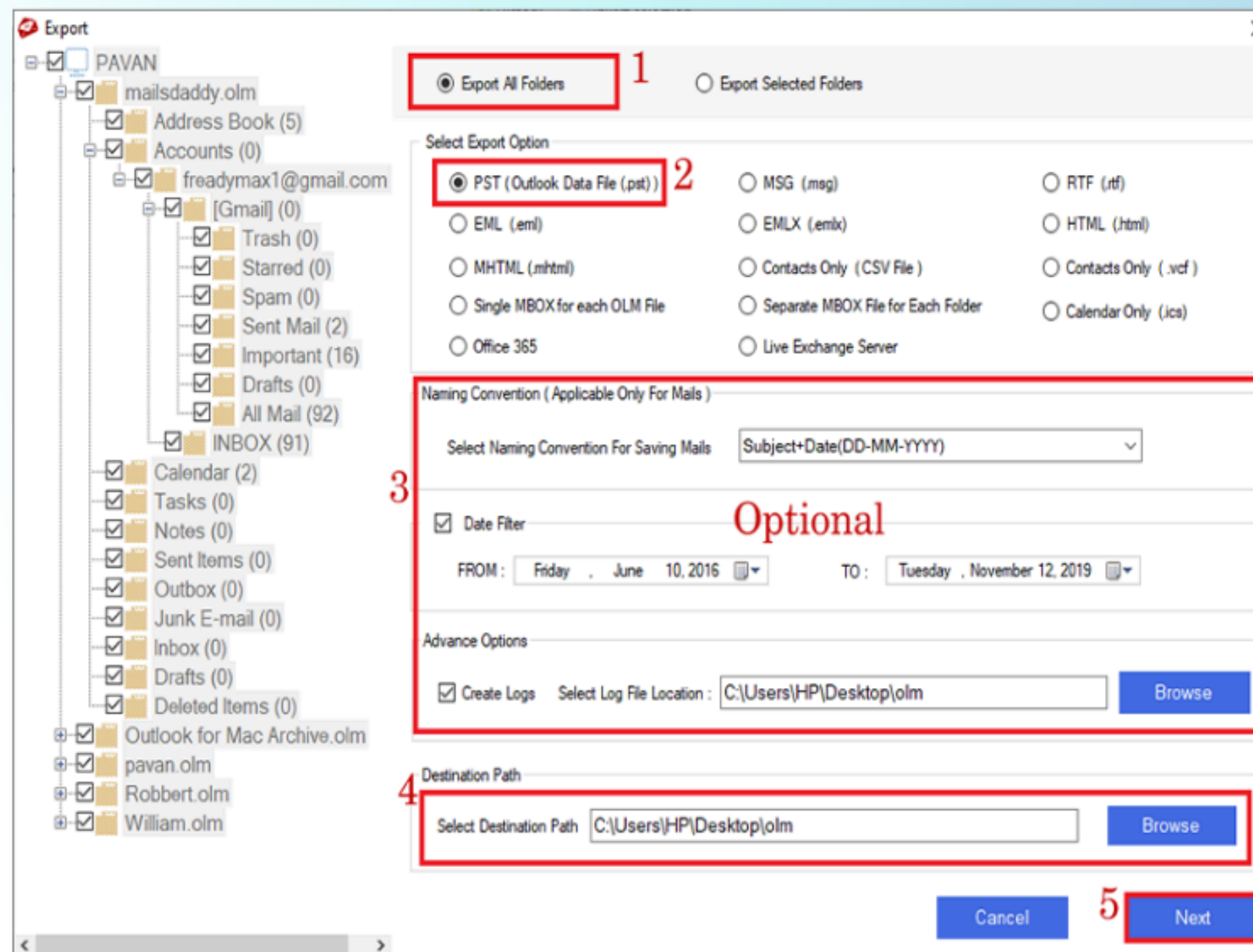
STEP 3

You can preview the email structure and email attachments in the email section >> Click the **Export** option to start batch migration.



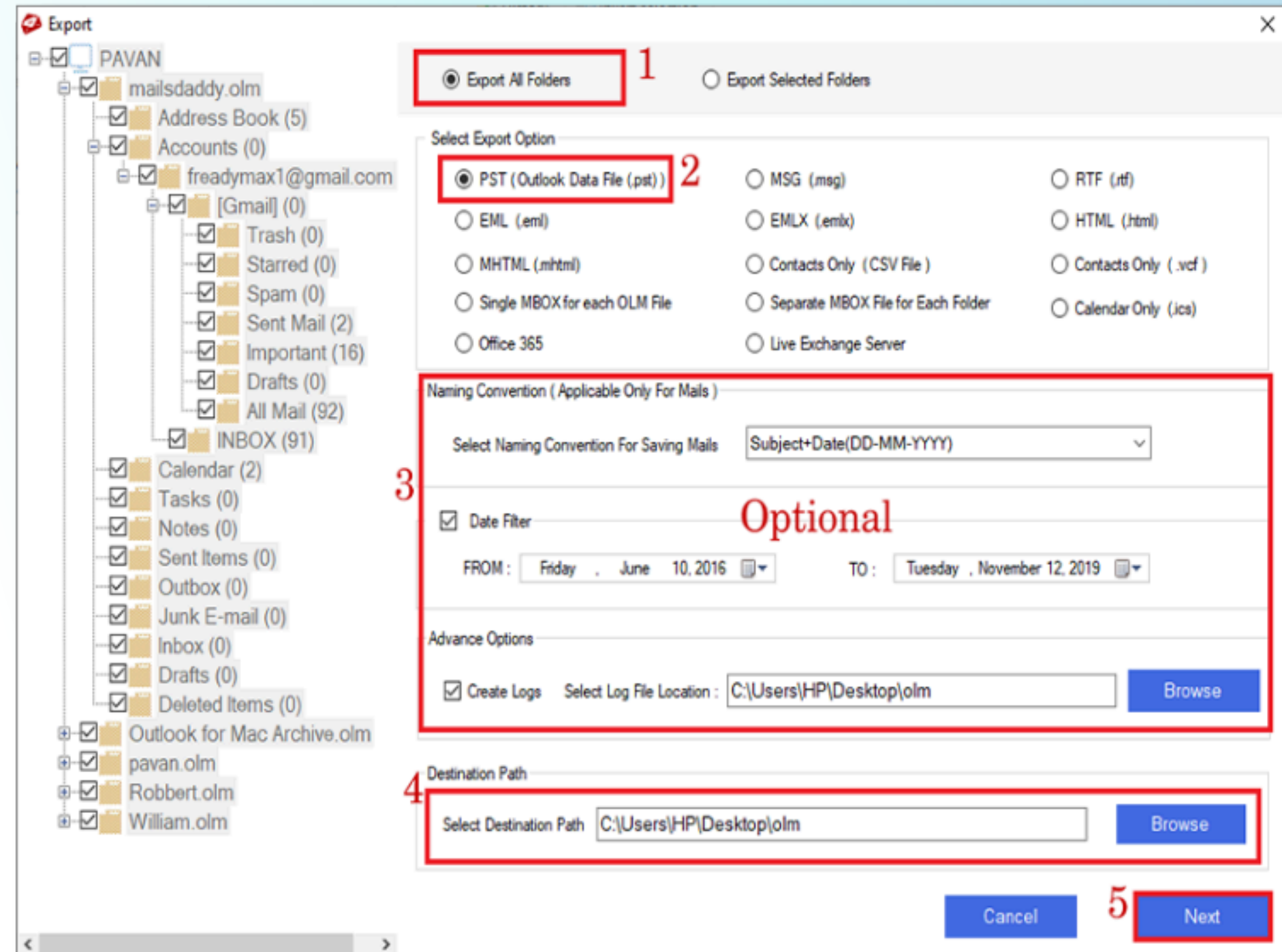
STEP 4

An Export Window opens, select the **Export** option like PST for Outlook >> **Date filter** and a **Create Log file** are optional, so you can skip it.



STEP 5

Click the **Browse** button and provide the **Destination path** in your system where you can save the file after conversion.

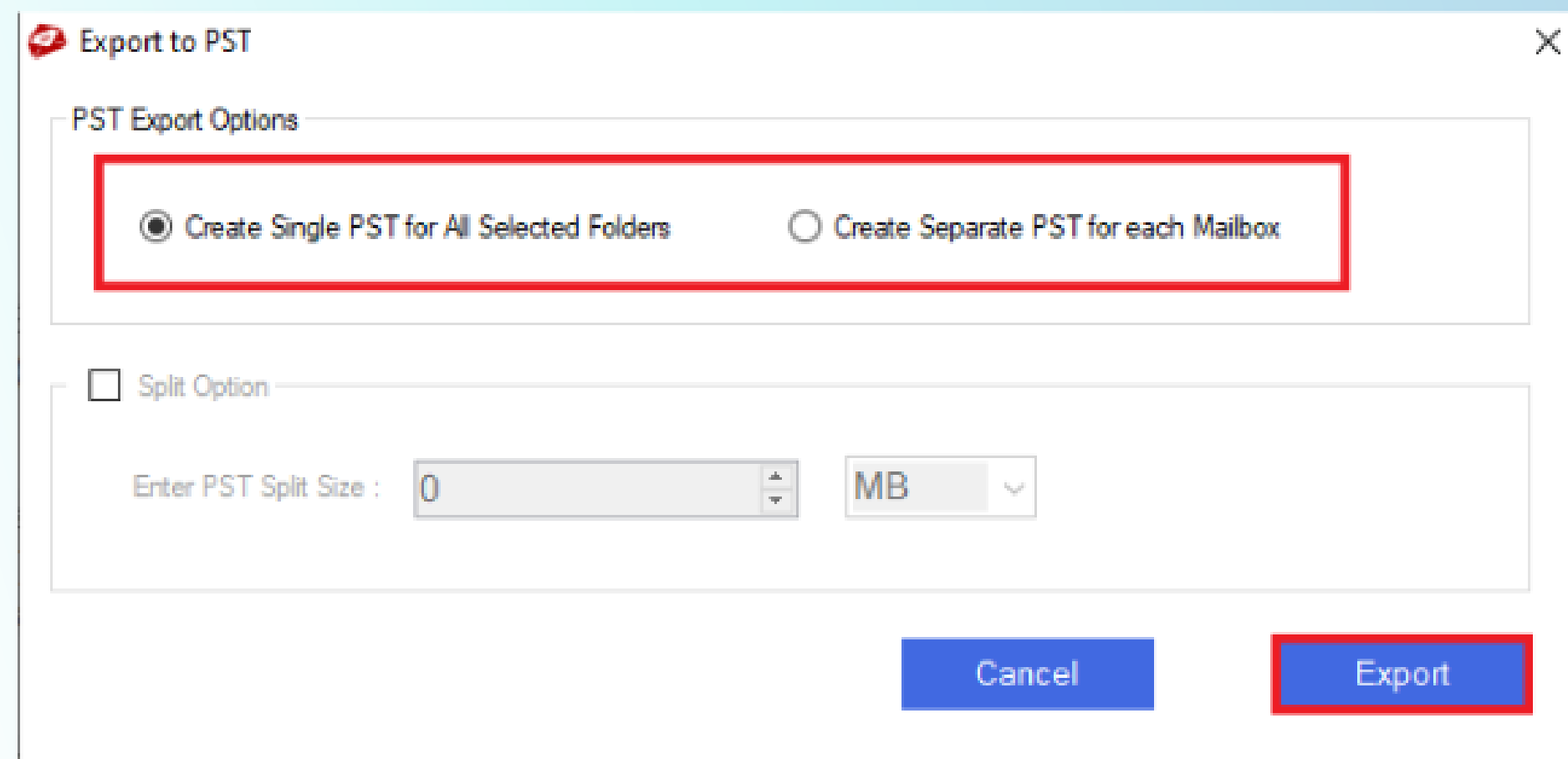


The screenshot shows the 'Export' dialog box with the following elements:

- 1** ☒ Export All Folders (highlighted with a red box)
- 2** ☒ PST (Outlook Data File (.pst)) (highlighted with a red box)
- 3** **Optional** section (highlighted with a red box) containing:
 - Naming Convention (Applicable Only For Mails): Select Naming Convention For Saving Mails (Subject+Date(DD-MM-YYYY))
 - ☒ Date Filter: FROM: Friday, June 10, 2016 TO: Tuesday, November 12, 2019
 - Advance Options: ☒ Create Logs, Select Log File Location: C:\Users\HP\Desktop\olm, Browse
- 4** Destination Path: Select Destination Path C:\Users\HP\Desktop\olm, Browse (highlighted with a red box)
- 5** Next button (highlighted with a red box)

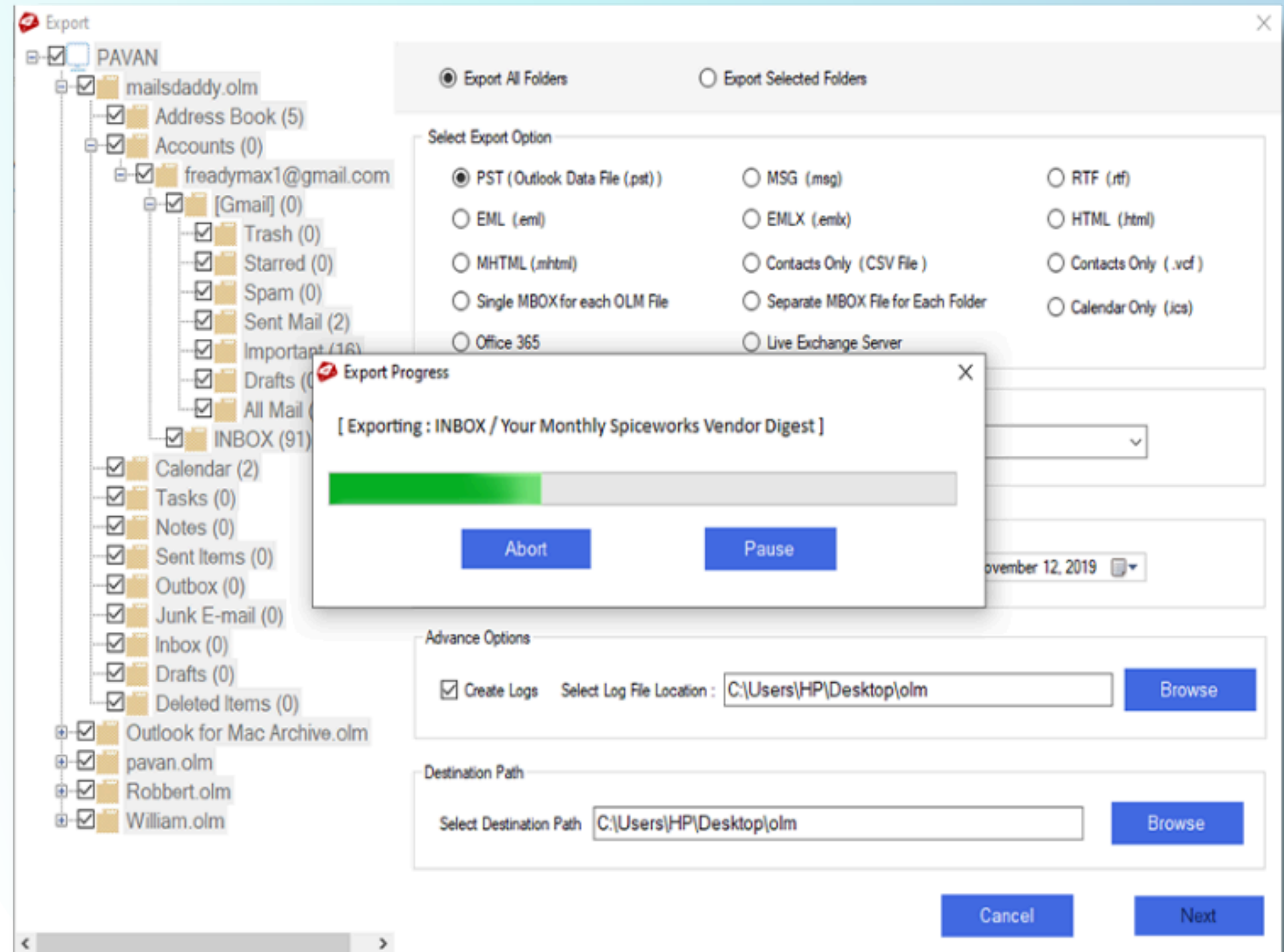
STEP 6

Select one conversion option **Create single PST for all selected folders** or **Separate PST for each mailbox >>** and select the **Split PST** file option to divide the large PST file.



STEP 7

Now click the **Export** option and wait until the process is complete. After completing the process click on the **OK** button.



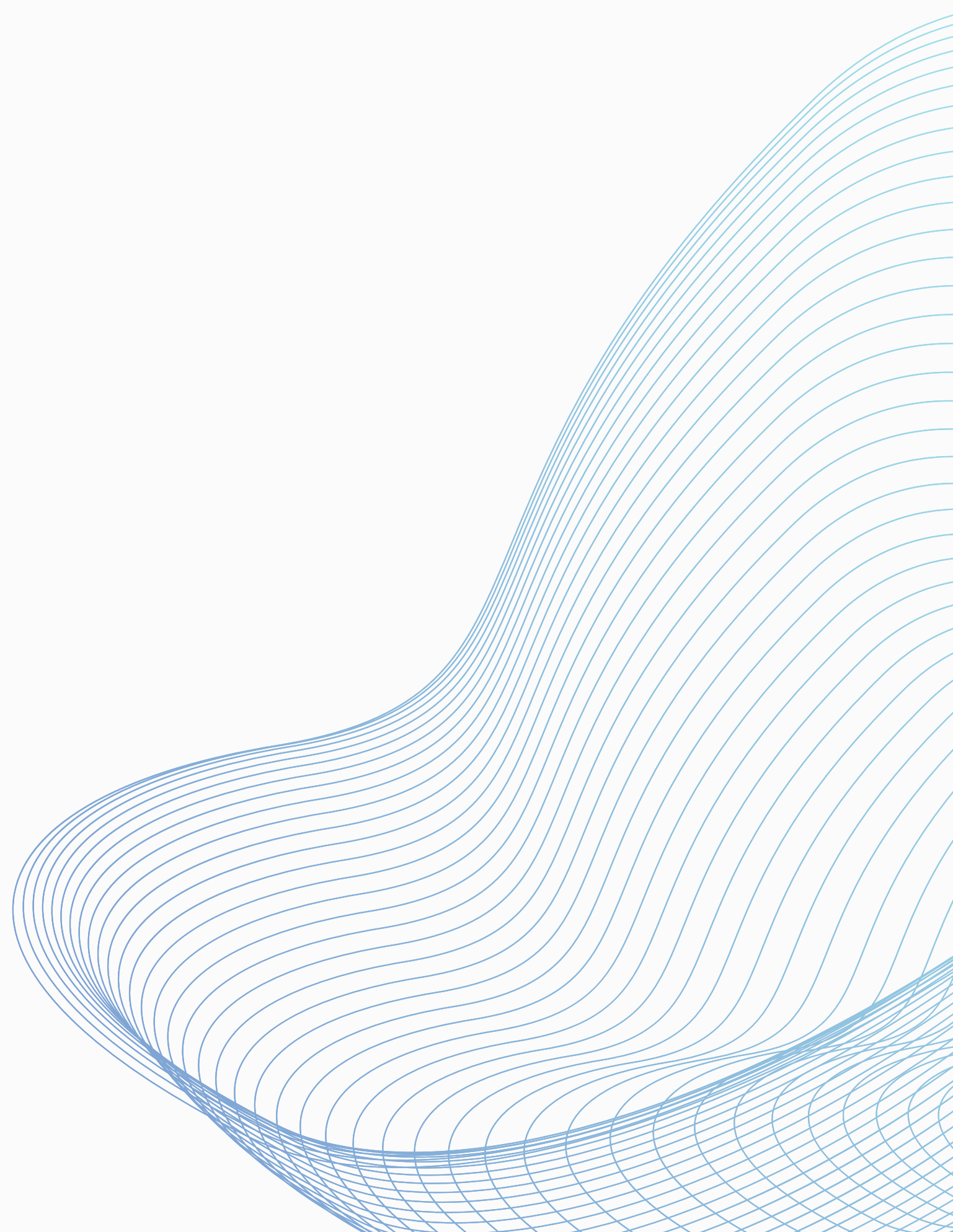


LET'S CONNECT WITH US!

+91 7836996337

support@mailsdaddy.com

www.MailsDaddy.com





Thank
YOU

